



Voted the Sunshine Coast's Favourite Builder

## KINGSCLIFF 191

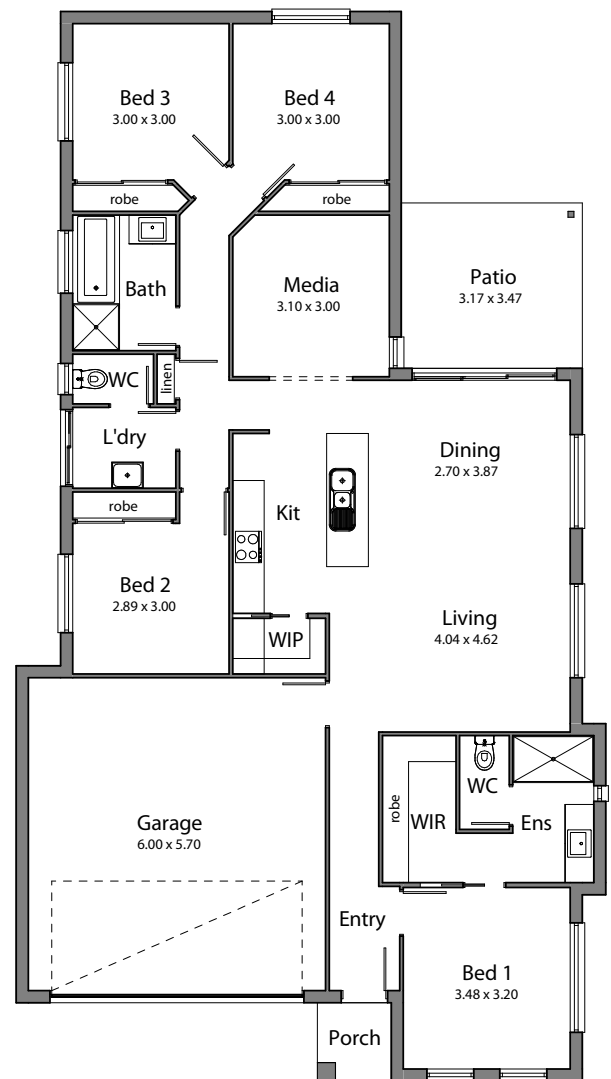
4 2 2 LOT 12.5X30 (375M2)

LOT 1168  
HARMONY ESTATE  
\$491,840

Aspire Move-in Package

- Facade as shown included
- Render to front
- LED downlight & Fan package
- Stone benchtops in kitchen & bathrooms
- Driveway & clothesline pad included
- Air conditioning
- All floor coverings
- Dishwasher
- 3 coat paint system
- Colourbond Roof
- Fixed site costs

Contact Mitch 0402 521 474 or [mitch@coastlifelifehomes.com.au](mailto:mitch@coastlifelifehomes.com.au)



Head Office 2/1 Premier Circuit, Warana QLD 4575 | Post PO Box 126, Buddina QLD 4575  
1300 307 004 | [info@coastlifelifehomes.com.au](mailto:info@coastlifelifehomes.com.au) | [www.coastlifelifehomes.com.au](http://www.coastlifelifehomes.com.au)  
"Look Design and Development Pty Ltd T/as Coast Life Homes" | ABN 89 130 652 701