



Voted the Sunshine Coast's Favourite Builder

KINGSCLIFF 198

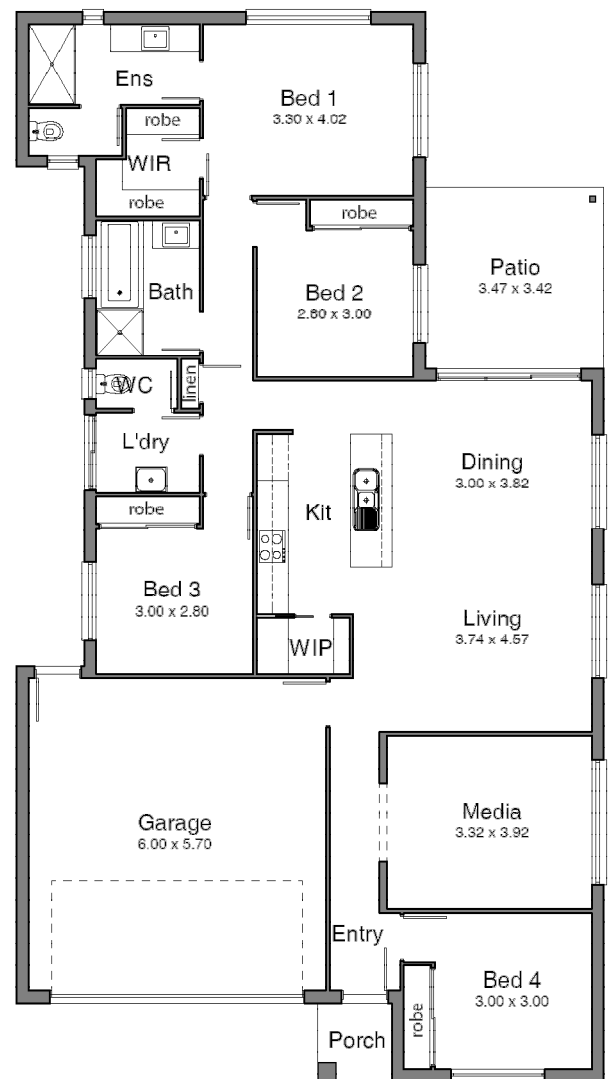
 4
  2
  2
  LOT MINIMUM 12.5 X 28

HOUSE PACKAGE
\$212,500

Aspire Move in Package

- Facade as shown included
- Render to front
- LED downlight & Fan package
- Stone benchtops in kitchen & bathrooms
- Driveway & clothesline pad included
- Air conditioning
- All floor coverings
- Dishwasher
- 5000l watertank
- Colourbond Roof
- Fixed site costs

Contact: Morgan 0411736947 or morgan@coastlifelifehome.com.au



Head Office 2/1 Premier Circuit, Warana QLD 4575 | Post PO Box 126, Buddina QLD 4575
 1300 307 004 | info@coastlifelifehomes.com.au | www.coastlifelifehomes.com.au
 "Look Design and Development Pty Ltd T/as Coast Life Homes" | ABN 89 130 652 701