



Voted the Sunshine Coast's Favourite Builder

CLOVELLY 148

 3
  2
  1
  LOT
 1302 10X25

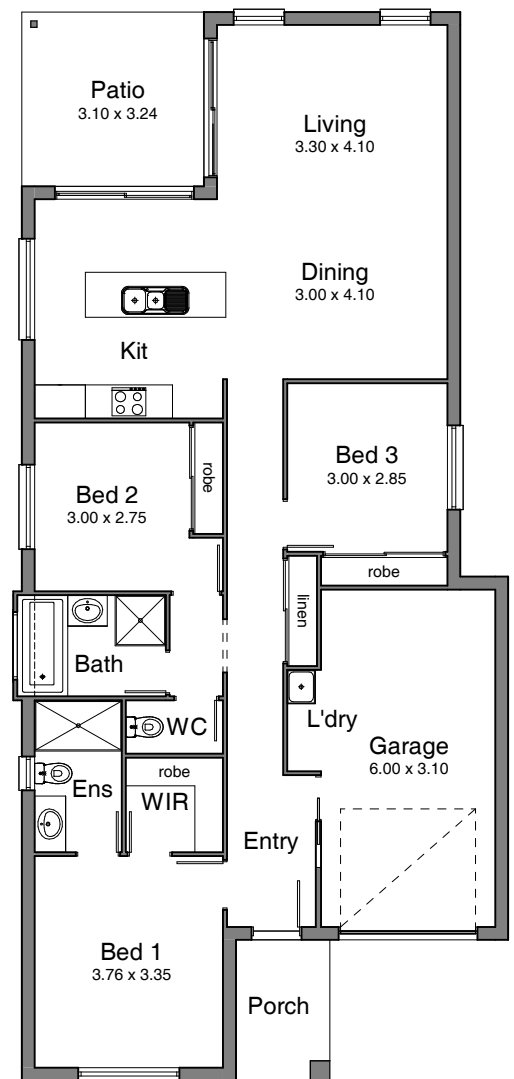
HOUSE & LAND HARMONY ESTATE

\$414,188

Aspire Move-in Package

- Facade as shown included
- Render to front, 1m return
- LED downlight & Fan package
- Stone benchtops in kitchen & bathrooms
- Exposed aggregate to driveway, clothesline and patio
- 1x 7.1kw 1x 2.5 kw Air conditioning
- All floor coverings
- Dishwasher
- Colourbond Roof
- Flyscreens and window coverings to windows
- Fencing & Landscaping included

Contact: Bryan 0431462405
bryan@coastlifelifehomes.com.au Aspire Move-in Package



Head Office 2/1 Premier Circuit, Warana QLD 4575 | Post PO Box 126, Buddina QLD 4575
 1300 307 004 | info@coastlifelifehomes.com.au | www.coastlifelifehomes.com.au
 "Look Design and Development Pty Ltd T/as Coast Life Homes" | ABN 89 130 652 701