

# Coast Life Homes

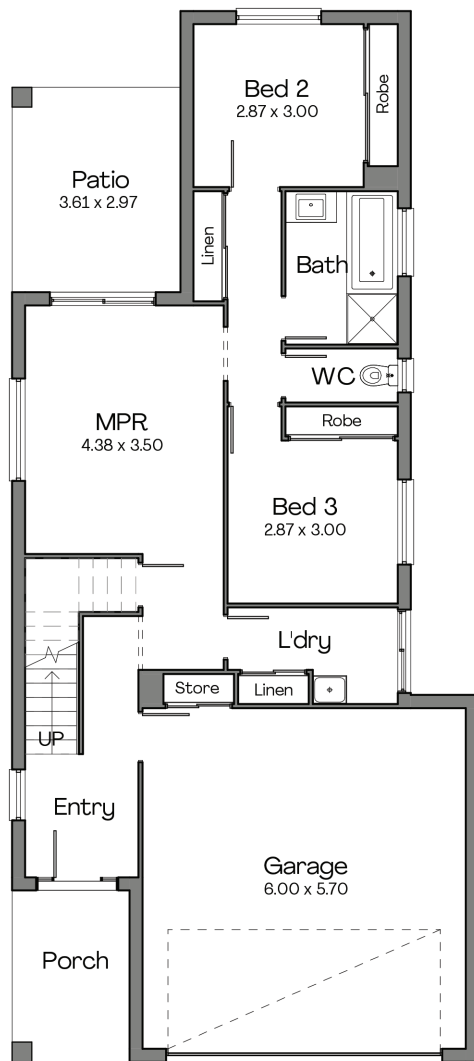
## BRONTE 245 TWO STOREY



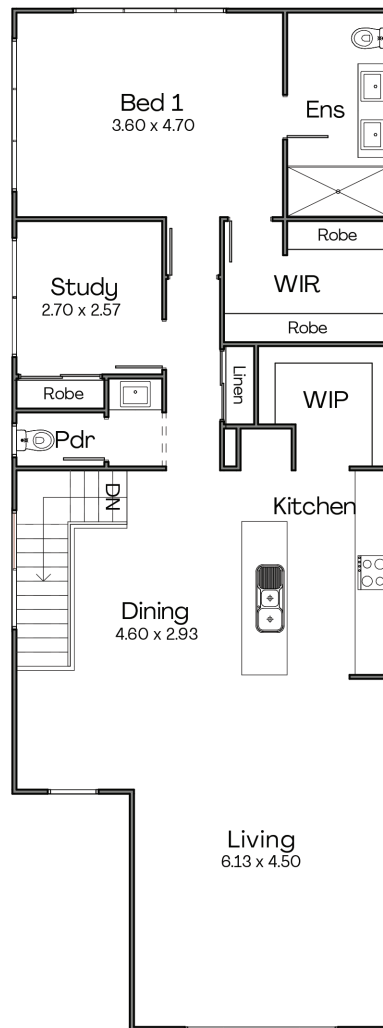
AREAS	
GF Living	78.94 m <sup>2</sup>
Garage	37.91 m <sup>2</sup>
Porch	6.25 m <sup>2</sup>
Patio	10.72 m <sup>2</sup>
1F Living	112.13 m <sup>2</sup>
<b>TOTAL</b>	<b>245.95 m<sup>2</sup></b>

SIZE	
<b>Ground Floor</b>	
Length	18.50 m
Width	8.23 m

<b>First Floor</b>	
Length	18 m
Width	6.71 m



Ground Floor



First Floor

For more information contact **1300 307 004** or visit [coastlifehomes.com.au](http://coastlifehomes.com.au)

Photography, illustrations, room sizes and floor plans shown in the brochure are to be used as a guide only. Lot widths are based on the standard facade and may vary depending on the facade chosen, state guidelines and council requirements. Please refer to your building contract and final working drawings for actual room sizes and inclusions. Coast Life Homes reserves the right to make alterations without notice. All plans are protected by copyright, no part may be used, reproduced or copied by any means or in any form without prior permission of Coast Life Homes.